



2010 NRF Health Reform Survey

Part-Time Employee Hours

May 2010

Executive Summary

- Retail is still heavily dependent on part-time employees – nearly half of respondents (45.8%) have more than 50% of their workforce on a part-time basis.
- The greatest concentration (55.1%) of part-time hours is between 21 and 30 hours per week. Nearly 6% work more than 30 hours.
- Month to month surges in hours could push more part-time employees to full-time status (30 hours) on an intermittent basis under the Patient Protection and Affordable Care Act of 2010 (PPACA).



All Rights Reserved – NRF – May 11, 2010

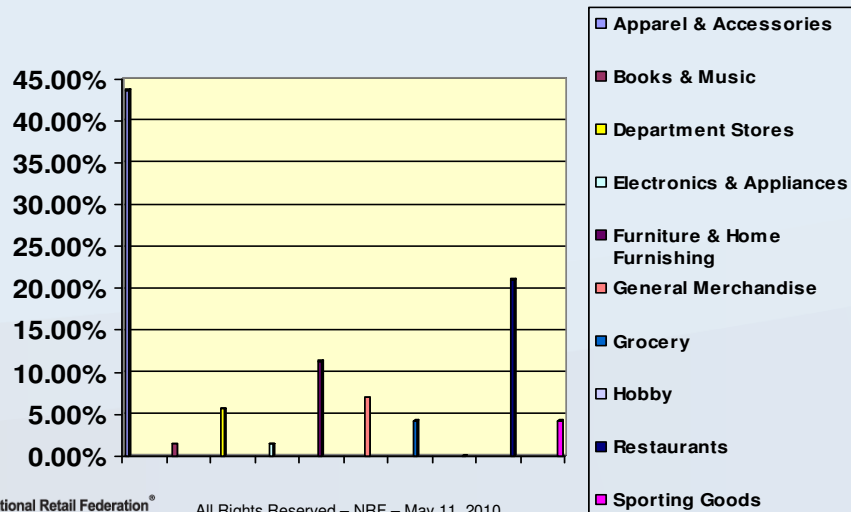
Executive Summary

- Many retailers (57.1%) expect rate increases between 6 to 10% in 2011, consistent with those seen in 2009 and 2010.
- A broad spectrum and size ranges of retailers and restaurateurs responded to the NRF survey.



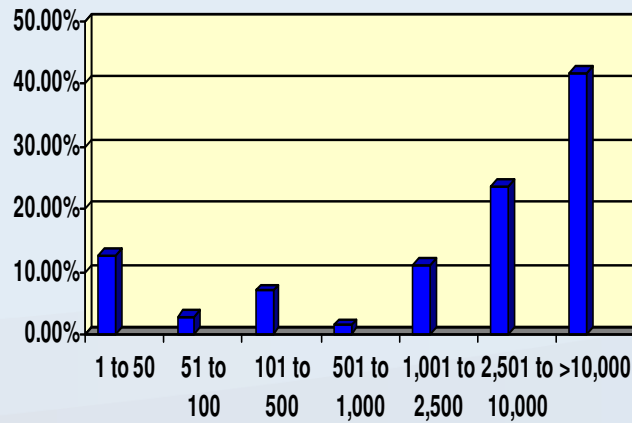
All Rights Reserved – NRF – May 11, 2010

Industry Segments Reporting

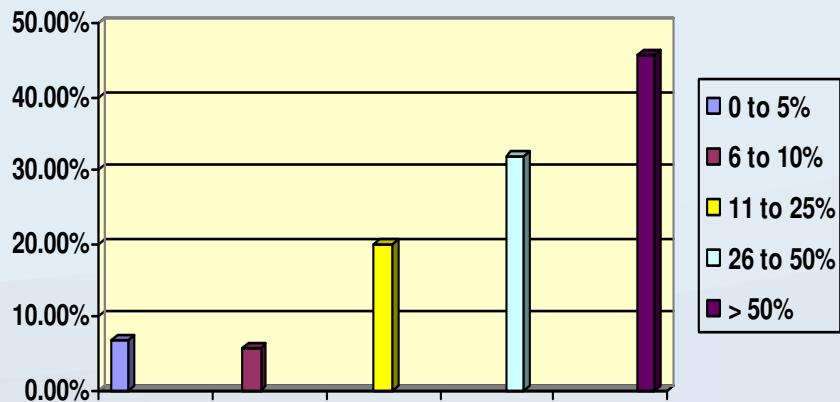


All Rights Reserved – NRF – May 11, 2010

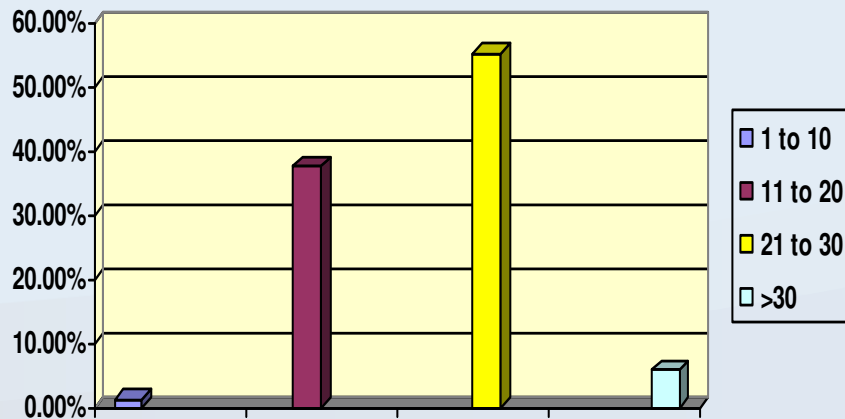
Total Workforce Size



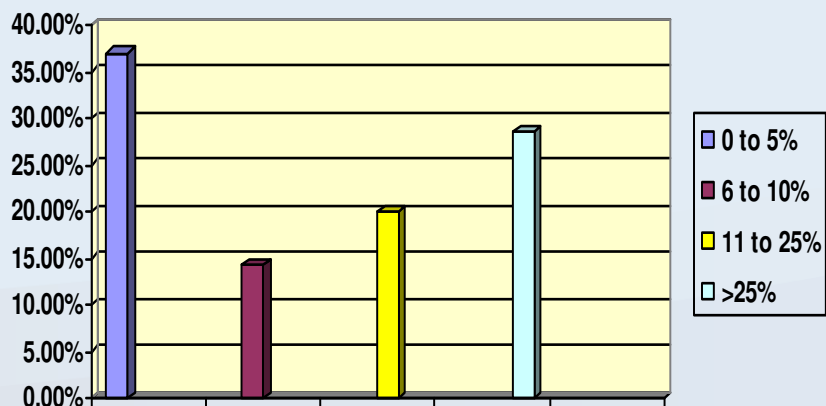
Percentage of Part-Time Employees



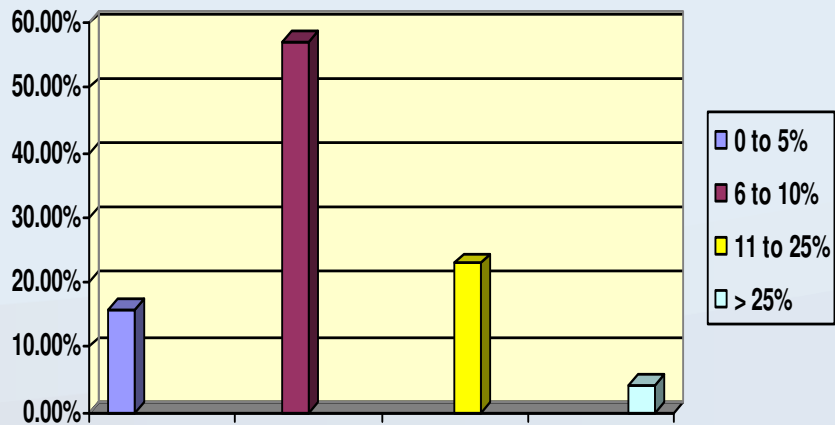
Average Part-Time Hours



Part-Time EEs – More than 30 hours / week



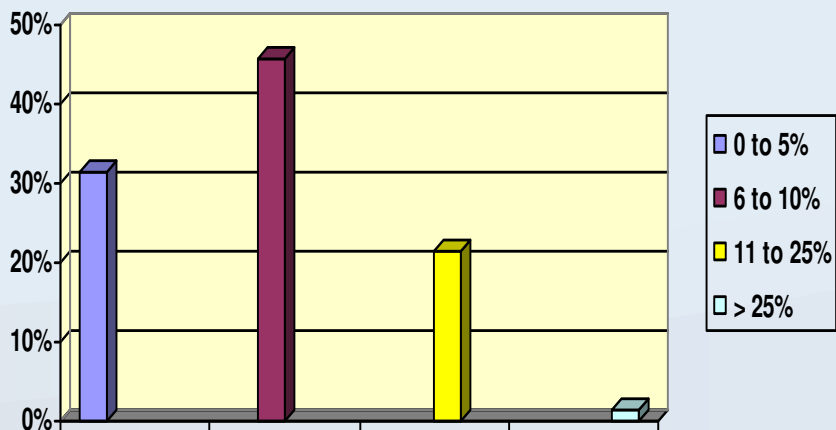
Expected Rate Increase in 2011



 National Retail Federation®
The Voice of Retail Worldwide

All Rights Reserved – NRF – May 11, 2010

Rate Increase in 2009



 National Retail Federation®
The Voice of Retail Worldwide

All Rights Reserved – NRF – May 11, 2010

For more information, contact:

Neil Trautwein

Vice President

Employee Benefits Policy Counsel

National Retail Federation

202 / 626-8170 phone

866 / 223-5389 fax

TrautweinN@nrf.com

www.nrf.com/healthcare

www.blog.nrf.com

All Rights Reserved, National Retail Federation (May 11, 2010)

